

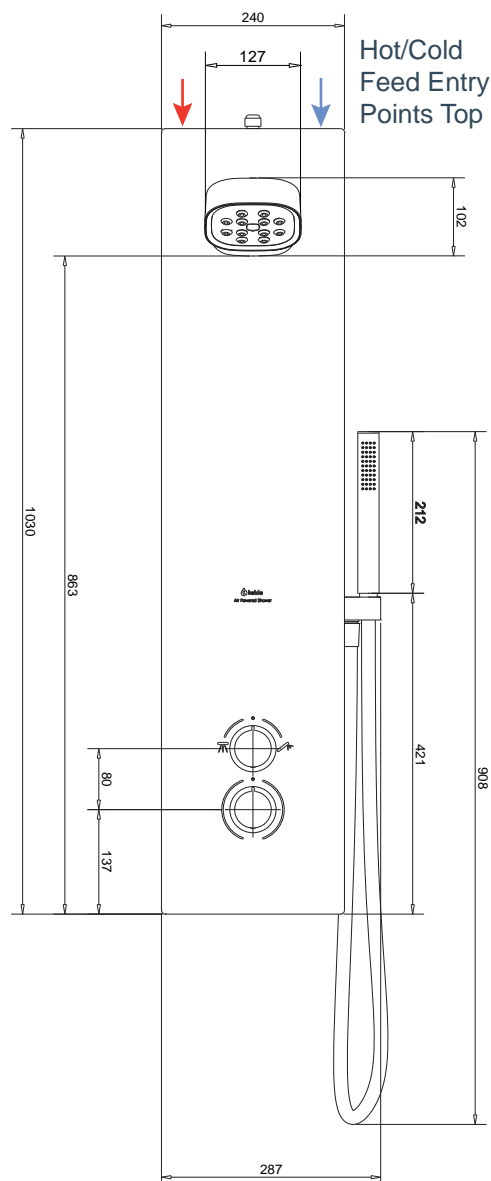
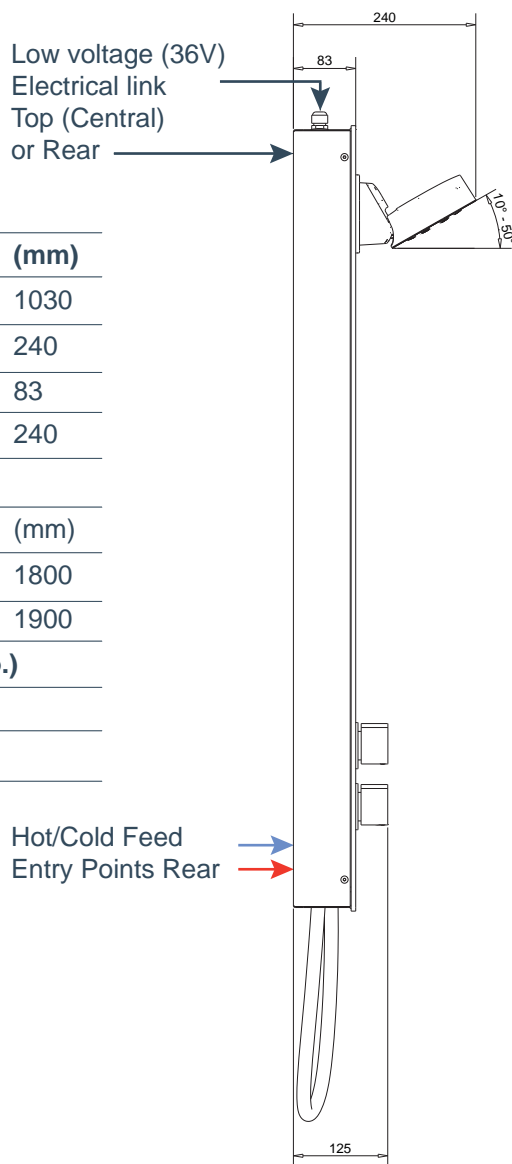


## TECHNICAL SPECIFICATION

SIDE ELEVATION

FRONT ELEVATION

Product Dimensions	(mm)
Length:	1030
Width:	240
Depth of Panel:	83
Depth to Head:	240
<b>Installation</b>	
Height to Shower Head	(mm)
Min:	1800
Max:	1900
<b>Available Flow Rates (SKU No.)</b>	
5 lpm:	93008005
6 lpm:	93008006



## Electrical

Voltage: 200-240V

Supply Phase: 1

Frequency: 50/60Hz

Enclosure Rating: Transformer IP67, Kelda hub IPX5

Requires 3Amp switched fused spur in dry zone

Fused spur to be connected back to 32A 30mA RCBO

## Logistics

Net Weight: 12Kg

Packed Weight: 14Kg

Packaged Dimensions: (H) 1145 x (W) 374 x (D) 224

## Construction

Glass: Low Iron Tempered Glass (6mm)

Panel Body: SAE 304 Stainless Steel

Shower Head: Chrome Plated ABS

Shower Faceplate: ABS

Shower Handset: Chrome Plated ABS

Nozzles: TPE

## Operation

Wall mounted Panel Shower with adjustable Flex head

Kelda air powered Flex adjustable shower head

Requires hot and cold water supply

Inlet connections 15mm copper pipe or 1/2" BSP

Position of water connection from backside / top

Top feed requires separate instal kit 85001000

Minimum advised working pressure 1 bar

Maximum advised working pressure 5 bar

Thermostatic mixing valve included - TMV2

## Maintenance Schedule\*

External Surfaces: Daily/Weekly

Showerhead: Quarterly

Internal Descale: Bi-Annually

\*Frequency should be adjusted inline with local water hardness and usage levels

## Warranty

2 Years (excluding Solenoid)

For further information please contact Kelda.

+44 (0)2381 290 640

[www.keldashowers.com](http://www.keldashowers.com)



## Certification

